

2015-16 PARENT ANNUAL GIVING STATUS REPORT

Thank you to our **43%** of parents who have participated in Parent Annual Giving so far this year.

The names of parents who have pledged Prayers/Thoughts for St. Gabriel School are included in a display in the school foyer in recognition of this special support

Parents have also pledged **\$59,124*** for the operating budget of the school.

Look for the complete Mid-Year Report in February's Newsletter. A list of parents who have pledged will be included. Want to be on that list? Just make your pledge by January 27, 2016!

*Includes company matching gifts.

DO YOU WONDER HOW ANNUAL GIVING AFFECTS THE OPERATING BUDGET?

St. Gabriel School has a comprehensive program designed to meet the many needs of the school, including financial and spiritual. An overview of St. Gabriel School's Operating Budget and its different components follows.

Don't forget, budget planning for the 2016-17 school year begins this month. Submit monetary pledges as soon as possible to aid in this process.

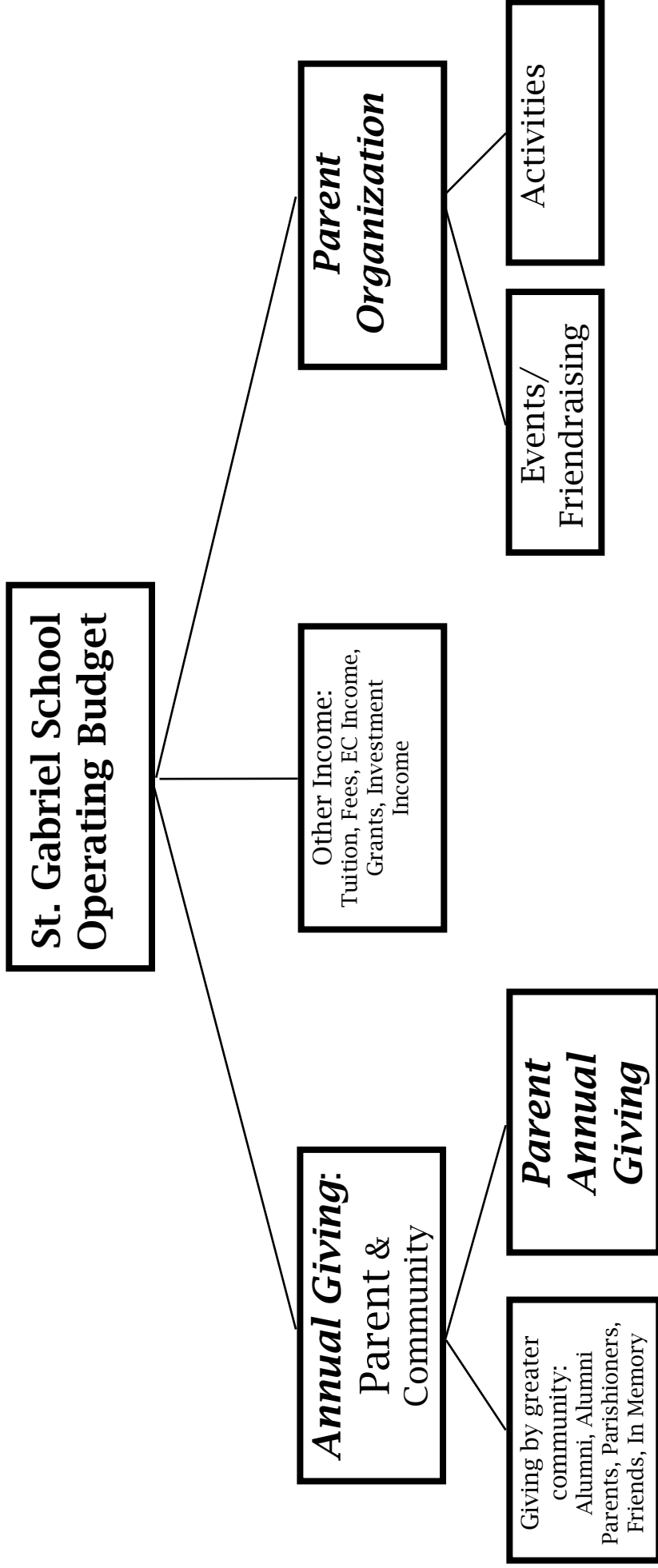
HERE IS A LIST, BY CLASS, OF CURRENT PARTICIPATION.

If you have more than one child, credit is given to each class

Kindergarten.....	37%
1st Grade.....	33%
2nd Grade.....	62%
3rd Grade.....	35%
4th Grade.....	54%
5th Grade.....	45%
6th Grade.....	40%
7th Grade.....	42%
8th Grade.....	38%

PLANNING FOR THE 2016-17 SCHOOL YEAR

Do you wonder how Annual Giving affects you? St. Gabriel School has a comprehensive program designed to meet the many needs of the school, including financial and spiritual. Below is an overview of St. Gabriel School's Operating Budget and its different components.



The goals of **Parent Annual Giving** and the **Parent Organization**, while not the same, have similar attributes. Both secure funds necessary for the school's operating budget. Without these sources of income (monetary pledges, event/activity income), the funds would need to come from elsewhere.

Through events, the parent organization also strives to **build our community**, a vital component to the success of St. Gabriel School. Parent Annual Giving asks all parents to **build our community** through a **pledge of prayers and/or thoughts** for St. Gabriel School through-out the school year. The names of parents who make this pledge are included in a special display below the Blessed Mother statue in the school foyer in recognition of this special support. **Don't forget, budget planning for the 2016-17 school year begins soon. Submit monetary pledges as soon as possible to aid in this process.**



ST. GABRIEL SCHOOL
 Parent Annual Giving Program
 Supporting Education at St. Gabriel

Yes! I/We pledge support of St. Gabriel School through a pledge of Prayers and/or Thoughts for St. Gabriel School, a monetary pledge or both.

Part A: Pledge of Prayers and/or Thoughts

I/We pledge to keep St. Gabriel in Prayer/Thought throughout the school year.

St. Gabriel is far more than a building. It is a community of people. Your pledge of prayers/thoughts is a show of care for St. Gabriel and our community. It is support when times are tough, and in thanks for our blessings. As a Catholic School, this benefit is greatly valued. *We, therefore, ask all families to make this pledge.*

Part B: Monetary Pledge

I/We pledge to St. Gabriel School (if you are able to make a monetary pledge, please be as generous as you can):

- \$5,000 \$1,200 (apprx 1 mo. tuition 2 children) \$600 (apprx 1 mo. tuition 1 child)
 \$350 (avg. gift) \$150 Other \$_____

PAYMENT OPTIONS:

Enclosed is my/our full/initial payment of \$_____ and/or
 I/We will make payments: Monthly Quarterly Other _____

My employer has a Matching Gifts Program:
 _____ I will provide forms or _____ match has been submitted

Please use this gift for (optional): the greatest school need staff development
 curriculum enhancement Scholarship/Endowment Fund
 Art program Other _____

Your Name:

Name: _____

Address *OR* Email Address(s): _____

HELP US SAVE PAPER: To receive an acknowledgement by email, please *clearly* print your email address(es) above.

Child(ren)'s Grade(s): _____

Your gift is TAX DEDUCTIBLE. Please make check payable to St. Gabriel School. THANK YOU!